

APPLICANT

# EXCALIBUR LAND COMPANY

## Holmwood Field

CALCASIEU PARISH, LOUISIANA

**Docket No. 19-88, Cam 1-2 Zone, Reservoir A  
Applicant: Excalibur Land Company**

**Docket No. 19-89, Marg-Cam Zone, Reservoir A  
Applicant: C6 Operating, L.L.C.**

**Docket No. 19-90, Cib Haz Sand, Reservoir A  
Applicant: Harrington, et al**

February 19, 2019

Witness: Bryan S. Groves

prepared by

**BRYAN GROVES**

**OIL & GAS GEOLOGIST**

UNITIZATION / 3-D INTERPRETATION

[www.bryangrovesgeology.com](http://www.bryangrovesgeology.com)

**EXCALIBUR**

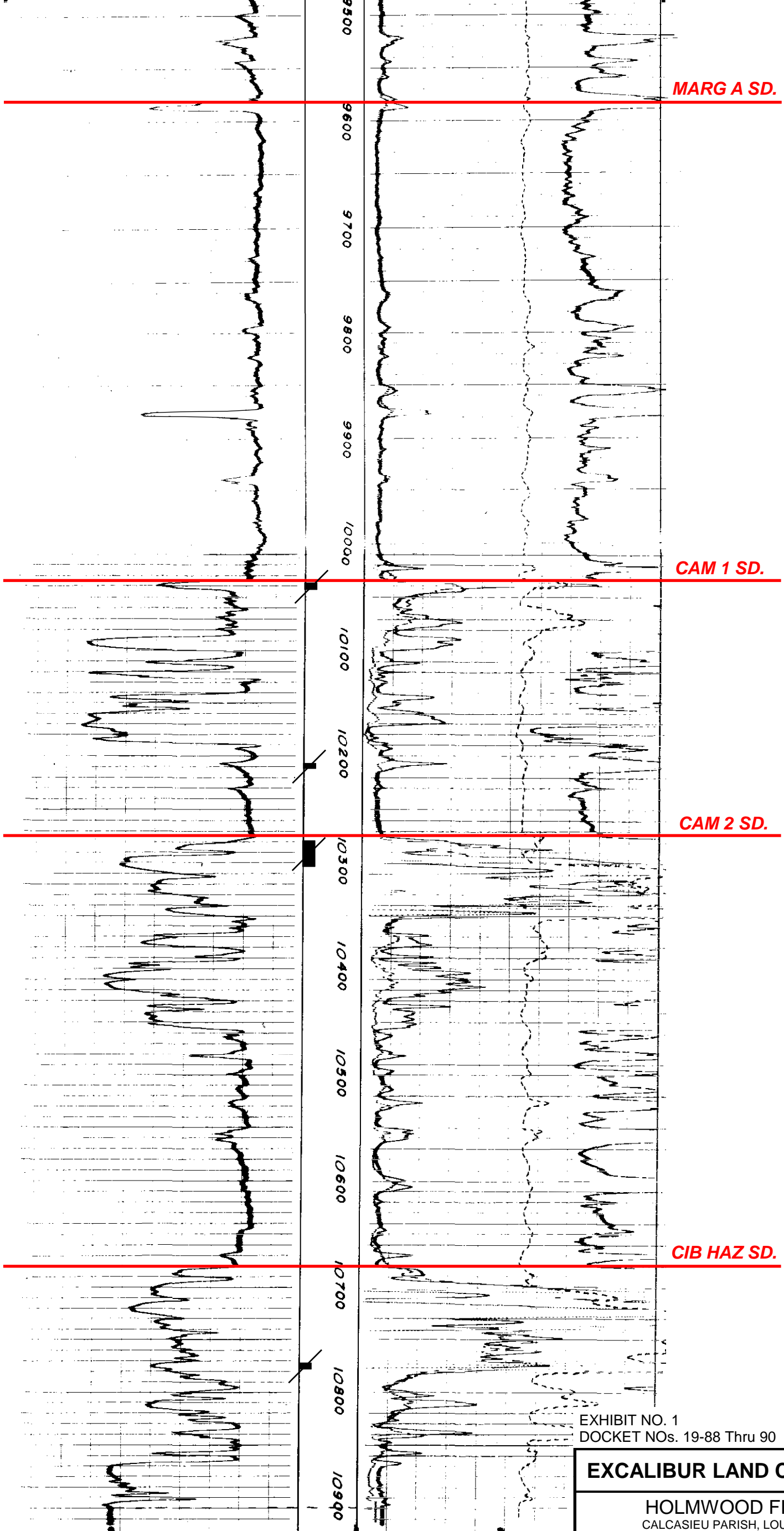
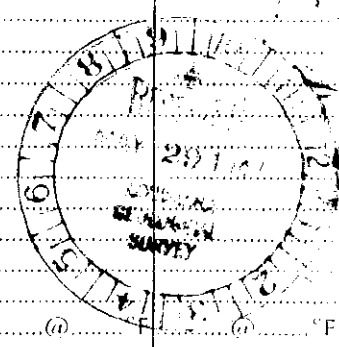
N 89°54' E 2973'  
and N 0°06' W  
330' fr. SW cor  
26-105-7W.

● Sohio Petroleum  
# 32994

WELL:..... W.E. WALKER et al #1  
RUN NO.:... COMPOSITE # 1-2  
FIELD:..... HOLMWOOD  
LOCATION: SEC. 26-105-7W.  
COUNTY: CALCASIEU  
STATE:..... LOUISIANA  
FILING No. L-83

Elevation: D.F. 37'  
K.B.:  
or G.L.:

RUN	4/15/47	4/30/47
Date	4/15/47	4/30/47
First Reading	10080	10910
Last Reading	1823	10080
Footage Measured	8257	830
Csg Shoe Schlum	1823	1823
Csg Shoe Driller	1840	1840
Max. Depth Reached	10080	10910
Bottom Driller	10085	10915
Depth Datum	SEE REMARKS.	
Mud Nature	MAGCOBAR	MAGCOBAR
" Density	10.9	12.0
" Viscosity	40	56
" Resistivity	1.5 @ 76' F	1.7 @ 84' F
Maximum Temp. ° F	184	187
Bit Size	9 7/8"	9 7/8"
Spacings		
AM	16"	16"
AM'	63"	63"
OA	24'	24'
Observers	MORRIS	SMITH



SOHIO PETR. CO.  
WALKER NO. 1  
HOLMWOOD

SCHL. T. D. 10910'  
DRLLR. T. D. 10915'  
COMPOSITE LOG

EXHIBIT NO. 1  
DOCKET NOS. 19-88 Thru 90 DATE: 2-19-19

**EXCALIBUR LAND COMPANY**

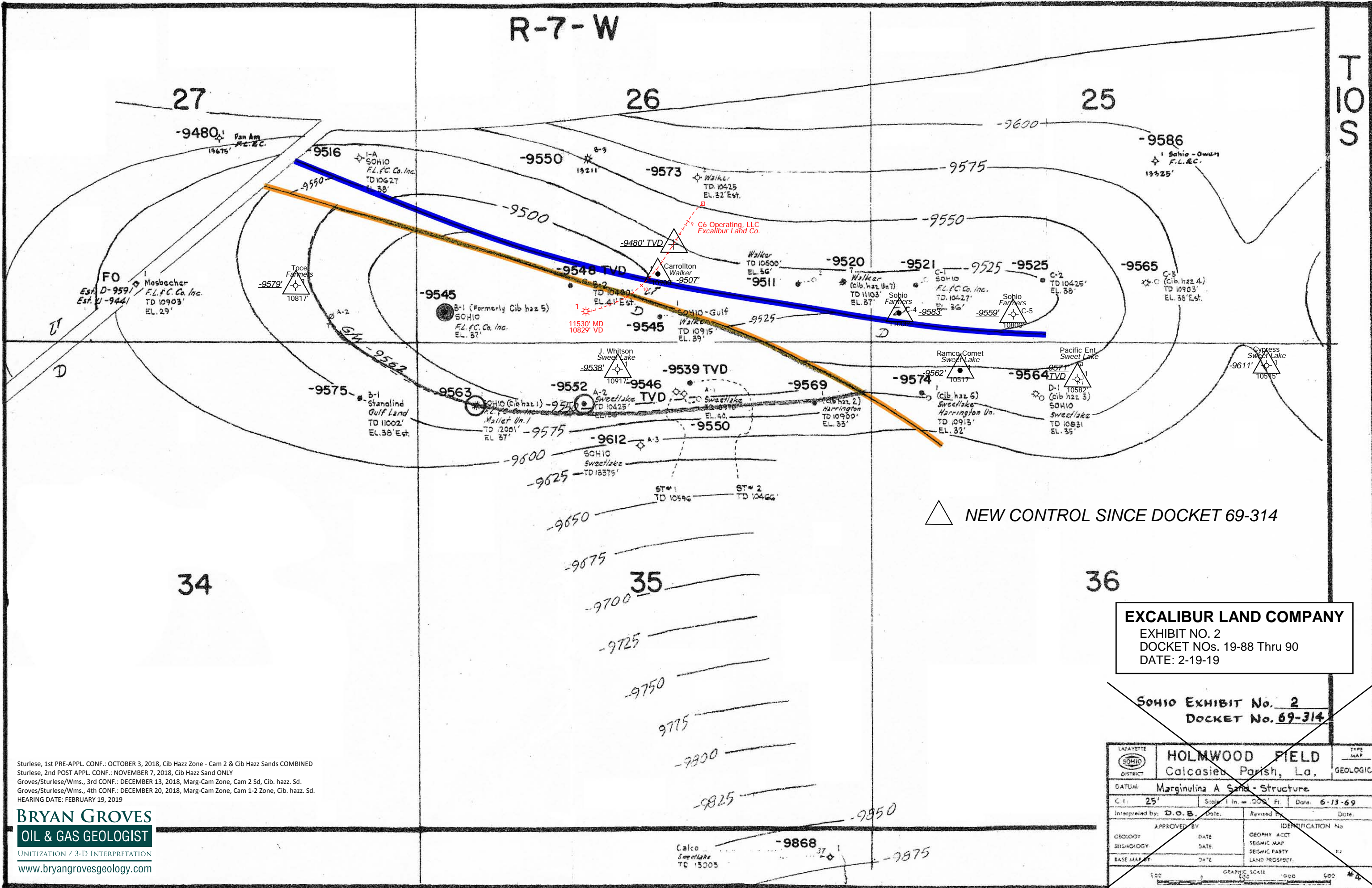
HOLMWOOD FIELD  
CALCASIEU PARISH, LOUISIANA

MAPPED HORIZONS

**BRYAN GROVES**  
OIL & GAS GEOLOGIST  
www.bryangrovesgeology.com

# R-7-W

T 10 S



△ NEW CONTROL SINCE DOCKET 69-314

**EXCALIBUR LAND COMPANY**  
 EXHIBIT NO. 2  
 DOCKET NOS. 19-88 Thru 90  
 DATE: 2-19-19

**SOHIO EXHIBIT No. 2**  
**DOCKET No. 69-314**

LAFAYETTE DISTRICT		<b>HOLMWOOD FIELD</b>		TYPE MAP
SOHIO		Calcasieu Parish, La.		GEOLOGIC
DATUM: Marginulina A Sand - Structure				
C 1: 25'	Scale: 1 in. = 200' Ft.	Date: 6-13-69		
Interpreted by: D.O.B.	Date:	Revised by:	Date:	
APPROVED BY:	DATE:	IDENTIFICATION No.		
GEOLOGY:	DATE:	GEOPHY. ACCT. SEISMIC MAP:		
BASE MAP:	DATE:	SEISMIC PARTY:		
		LAND PROSPECT:		
500		GRAPHIC SCALE	500	

Sturlese, 1st PRE-APPL. CONF.: OCTOBER 3, 2018, Cib Haz Zone - Cam 2 & Cib Haz Sands COMBINED  
 Sturlese, 2nd POST APPL. CONF.: NOVEMBER 7, 2018, Cib Haz Sand ONLY  
 Groves/Sturlese/Wms., 3rd CONF.: DECEMBER 13, 2018, Marg-Cam Zone, Cam 2 Sd, Cib. hazz. Sd.  
 Groves/Sturlese/Wms., 4th CONF.: DECEMBER 20, 2018, Marg-Cam Zone, Cam 1-2 Zone, Cib. hazz. Sd.  
 HEARING DATE: FEBRUARY 19, 2019

**BRYAN GROVES**  
**OIL & GAS GEOLOGIST**  
 UNITIZATION / 3-D INTERPRETATION  
 www.bryangrovesgeology.com

R-7-W

27

26

25

Pan Am  
FL & C.  
13675

I-A  
SOHIO  
FL & C. Co. Inc.  
TD 10627  
EL. 38'

B-3  
13211

3  
Walker  
TD 10425  
EL. 32' Est.

Sohio-Owen  
FL & C.  
13325

**ORANGE FAULT**

I  
Mosbacher  
FL & C. Co. Inc.  
TD 10903'  
EL. 29'

Toce  
Farmers  
Poss. F/10490'  
10817'

B-2  
TD 10480'  
EL. 41' Est.

1  
Carrollton  
Walker  
10900' F/9400'

Walker  
TD 10600'  
EL. 36'

7  
Walker  
(Cib. haz. Un7)  
TD 11103'  
EL. 37'

C-1  
SOHIO  
FL & C. Co. Inc.  
TD 10427'  
EL. 36'

C-2  
TD 10425'  
EL. 36'

C-3  
(Cib. haz. 4)  
TD 10903'  
EL. 36' Est.

A-2  
TA

B-1 (Formerly Cib haz 5)  
SOHIO  
FL & C. Co. Inc.  
EL. 37'

D-1  
11530' MD  
10829' VD

SOHIO-Gulf  
Walker  
TD 10915'  
EL. 39'

D-60' f at 10238

J. Whitson  
Sweet Lake  
F/10450'

D-35' f at 9741

B-1  
Stanolind  
Gulf Land  
TD 11002'  
EL. 38' Est.

SOHIO (Cib haz 1)  
FL & C. Co. Inc.  
Mallet Un. 1  
TD 12001'  
EL. 37'

A-2  
Sweet Lake  
TD 10425'  
EL. 36'

A-1  
Sweet Lake  
TD 10970'  
EL. 40.

(Cib haz 2)  
Harrington  
TD 10900'  
EL. 33'

(Cib. haz. 6)  
Sweet Lake  
Harrington Un.  
TD 10913'  
EL. 32'

D-1  
(Cib haz 3)  
SOHIO  
Sweet Lake  
TD 10831  
EL. 35'

D-120' f at 11713

SOHIO  
Sweet Lake  
TD 18375'

D-40' f at 11470?

ST#1  
TD 10596'  
D-50' f at 10375

ST#2  
TD 10466'  
D-60' f at 10205

34

35

36



NEW CONTROL SINCE DOCKET 69-314

**EXCALIBUR LAND COMPANY**  
EXHIBIT NO. 3  
DOCKET NOS. 19-88 Thru 90  
DATE: 2-19-19

~~SOHIO EXHIBIT NO. 3  
DOCKET NO. 69-314~~

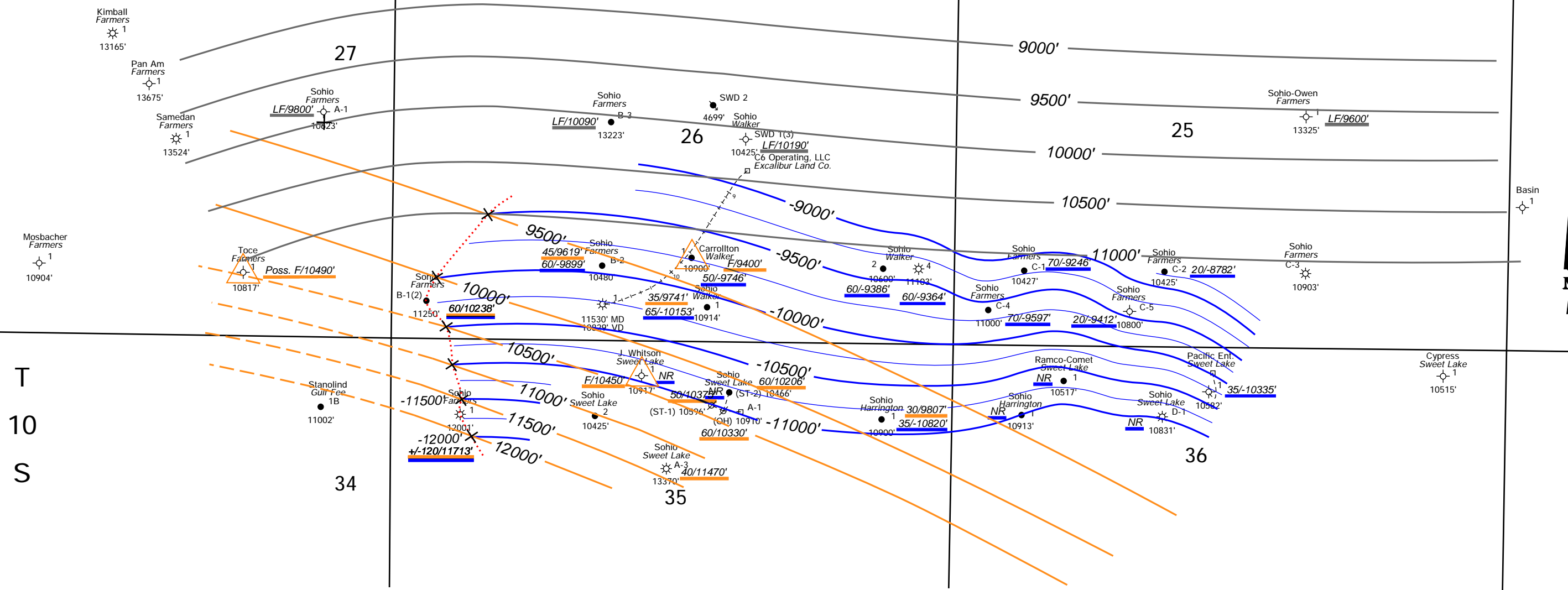
Sturlese, 1st PRE-APPL. CONF.: OCTOBER 3, 2018, Cib Haz Zone - Cam 2 & Cib Haz Sands COMBINED  
Sturlese, 2nd POST APPL. CONF.: NOVEMBER 7, 2018, Cib Haz Sand ONLY  
Groves/Sturlese/Wms., 3rd CONF.: DECEMBER 13, 2018, Marg-Cam Zone, Cam 2 Sd, Cib. haz. Sd.  
Groves/Sturlese/Wms., 4th CONF.: DECEMBER 20, 2018, Marg-Cam Zone, Cam 1-2 Zone, Cib. haz. Sd.  
HEARING DATE: FEBRUARY 19, 2019

**BRYAN GROVES**  
OIL & GAS GEOLOGIST  
UNITIZATION / 3-D INTERPRETATION  
www.bryangrovesgeology.com

Calco  
Sweet Lake  
TD 13005

LAFAYETTE DISTRICT	<b>HOLMWOOD FIELD</b> Calcasieu Parish, La.	TYPE MAP GEOLOGIC
DATUM: <b>FAULT PLANES</b>		
C. I.: <b>500'</b>	Scale: 1 in. = 1000' Ft.	Date: <b>6-13-69</b>
Interpreted by: <b>D. O. B.</b>	Date:	Revised by: _____ Date:
APPROVED BY: _____	DATE: _____	IDENTIFICATION No. _____
GEOLOGY: _____	DATE: _____	GEOPHY. ACCT. _____
SEISMOLOGY: _____	DATE: _____	SEISMIC MAP. _____
BASE MAP: _____	DATE: _____	SEISMIC PARTY. _____
		LAND PROSPECT: _____
500 0 500 GRAPHIC SCALE		

R 7 W



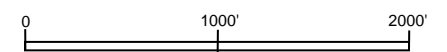
T  
10  
S

EXHIBIT NO. 4  
DOCKET NOs. 19-88 Thru 90 DATE: 2-19-19

**EXCALIBUR LAND COMPANY**

HOLMWOOD FIELD  
CALCASIEU PARISH, LOUISIANA

FAULT PLANE MAP  
C.I.: 500'



**BRYAN GROVES**  
OIL & GAS GEOLOGIST  
UNITIZATION / 3-D INTERPRETATION  
www.bryangrovesgeology.com

Sturlese, 1st PRE-APPL. CONF.: OCTOBER 3, 2018, Cib Haz Zone - Cam 2 & Cib Haz Sands COMBINED  
Sturlese, 2nd POST APPL. CONF.: NOVEMBER 7, 2018, Cib Haz Sand ONLY  
Groves/Sturlese/Wms., 3rd CONF.: DECEMBER 13, 2018, Marg-Cam Zone, Cam 2 Sd, Cib. hazz. Sd.  
Groves/Sturlese/Wms., 4th CONF.: DECEMBER 20, 2018, Marg-Cam Zone, Cam 1-2 Zone, Cib. hazz. Sd.  
HEARING DATE: FEBRUARY 19, 2019

**BRYAN GROVES**  
OIL & GAS GEOLOGIST  
www.bryangrovesgeology.com

R 7 W

27

26

25

Basin

N

Mosbacher Farmers  
10904'

Toce Farmers  
10817'

Kimball Farmers  
13165'

Pan Am Farmers  
13675'

Samedan Farmers  
13524'

Sohio Farmers  
A-1  
10423'

Sohio Farmers  
B-3  
13223'

SWD 2  
4699'

Sohio Walker  
SWD 1(3)  
10425'

C6 Operating, LLC  
Excalibur Land Co.

Sohio-Owen Farmers  
13325'

Sohio Farmers  
B-1(2)  
11250'

Sohio Farmers  
B-2  
10480'

Carrollton Walker  
10900'

Sohio Walker  
10914'

Sohio Walker  
11103'

Sohio Farmers  
C-4  
11000'

Sohio Farmers  
C-1  
10427'

Sohio Farmers  
C-2  
10425'

Sohio Farmers  
C-3  
10903'

60/10238'

60/9899'

65/10153'

50/9746'

60/9386'

60/9364'

70/9597'

70/9246'

20/9412'

20/8782'

-11500'

-12000'

+/-120/11713'

Sohio Sweet Lake  
2  
10425'

J. Whitson Sweet Lake  
NR  
10917'

Sohio Sweet Lake  
NR  
10466'

(ST-1) 10596'

(OH) 10910'

-11000'

Sohio Harrington  
1  
10900'

35/-10820'

Sohio Harrington  
NR  
10913'

Ramco-Comet Sweet Lake  
NR  
10517'

Sohio Sweet Lake  
NR  
10831'

Pacific Ent. Sweet Lake  
1  
10502'

35/-10335'

Cypress Sweet Lake  
1  
10515'

Stanolind Gulf Fee  
1B  
11002'

34

35

36

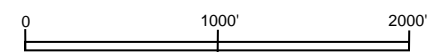
T  
10  
S

EXHIBIT NO. 5  
DOCKET NOS. 19-88 Thru 90 DATE: 2-19-19

**EXCALIBUR LAND COMPANY**

HOLMWOOD FIELD  
CALCASIEU PARISH, LOUISIANA

FAULT PLANE MAP  
C.I.: 500'



**BRYAN GROVES**  
OIL & GAS GEOLOGIST  
www.bryangrovesgeology.com

**BRYAN GROVES**  
OIL & GAS GEOLOGIST  
UNITIZATION / 3-D INTERPRETATION  
www.bryangrovesgeology.com

Sturlese, 1st PRE-APPL. CONF.: OCTOBER 3, 2018, Cib Haz Zone - Cam 2 & Cib Haz Sands COMBINED  
Sturlese, 2nd POST APPL. CONF.: NOVEMBER 7, 2018, Cib Haz Sand ONLY  
Groves/Sturlese/Wms., 3rd CONF.: DECEMBER 13, 2018, Marg-Cam Zone, Cam 2 Sd, Cib. hazz. Sd.  
Groves/Sturlese/Wms., 4th CONF.: DECEMBER 20, 2018, Marg-Cam Zone, Cam 1-2 Zone, Cib. hazz. Sd.  
HEARING DATE: FEBRUARY 19, 2019

R 7 W

HIGHER  
PRIMARY  
STRUCTURE

LOWER  
SECONDARY  
STRUCTURE

T  
10  
S

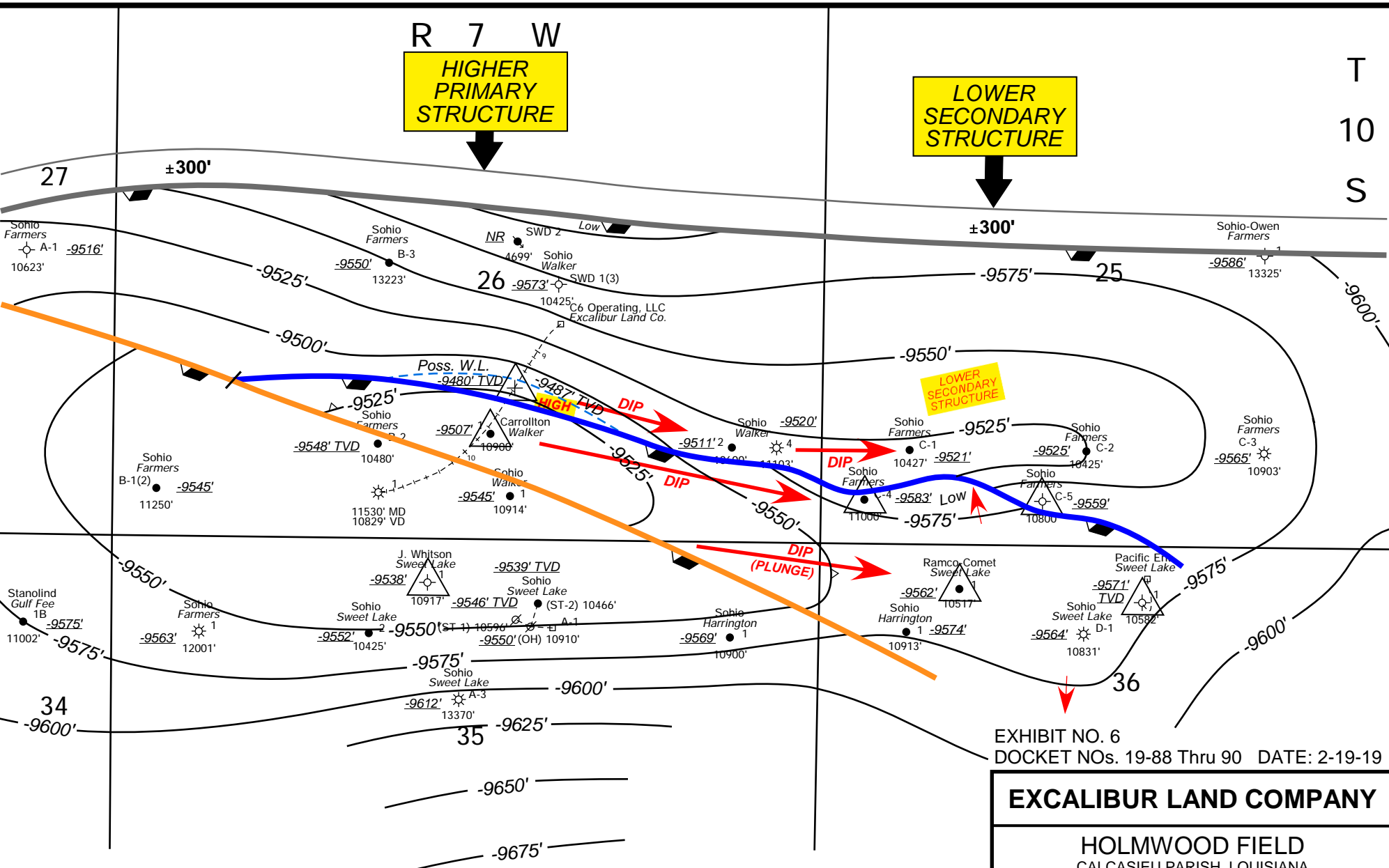
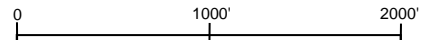


EXHIBIT NO. 6  
DOCKET NOS. 19-88 Thru 90 DATE: 2-19-19

**EXCALIBUR LAND COMPANY**

HOLMWOOD FIELD  
CALCASIEU PARISH, LOUISIANA  
REVISED STRUCTURE MAP  
MARG A SAND  
C.I.: 25'



**BRYAN GROVES**  
OIL & GAS GEOLOGIST  
www.bryangrovesgeology.com

△ NEW CONTROL SINCE DOCKET 69-314

**BRYAN GROVES**  
OIL & GAS GEOLOGIST  
UNITIZATION / 3-D INTERPRETATION  
www.bryangrovesgeology.com

Sturlese, 1st PRE-APPL. CONF.: OCTOBER 3, 2018, Cib Haz Zone - Cam 2 & Cib Haz Sands COMBINED  
Sturlese, 2nd POST APPL. CONF.: NOVEMBER 7, 2018, Cib Haz Sand ONLY  
Groves/Sturlese/Wms., 3rd CONF.: DECEMBER 13, 2018, Marg-Cam Zone, Cam 2 Sd, Cib. hazz. Sd.  
Groves/Sturlese/Wms., 4th CONF.: DECEMBER 20, 2018, Marg-Cam Zone, Cam 1-2 Zone, Cib. hazz. Sd.  
HEARING DATE: FEBRUARY 19, 2019

R 7 W

27

T  
10  
S

Sohio  
Farmers  
A-1  
10623'

Sohio  
Farmers  
B-3  
13223'

SWD 2  
4699'  
Sohio  
Walker  
SWD 1(3)  
10425'  
C6 Operating, LLC  
Excalibur Land Co.

A

Sohio  
Farmers  
B-1(2)  
11280'

Sohio  
Farmers  
B-2  
10480'  
CAM 2  
CIB H  
11530' MD  
10829' VD  
Sohio  
Walker  
10914'

CAM 1  
1  
Carrollton  
Walker  
10900'

Sohio  
Walker  
2  
10600'  
11103'  
4

Sohio  
Farmers  
C-1  
10427'  
Sohio  
Farmers  
C-4  
11000'

Stanolind  
Gulf Fee  
1B  
11002'

Sohio  
Farmers  
1  
12001'

J. Wilson  
Sweet Lake  
1  
10917'  
Sohio  
Sweet Lake  
2  
10425'

Sohio  
Sweet Lake  
A-3  
13370'

35

Sohio  
Sweet Lake  
(ST-2) 10914'  
A-1  
(OH) 10910'

Sohio  
Harrington  
1  
10900'

Ramco-Comet  
Sweet Lake  
1  
10517'  
Sohio  
Harrington  
1  
10913'

34

# FAULTING AT CIB HAZ HORIZON

**BRYAN GROVES**  
OIL & GAS GEOLOGIST

UNITIZATION / 3-D INTERPRETATION  
www.bryangrovesgeology.com

Sturlese, 1st PRE-APPL. CONF.: OCTOBER 3, 2018, Cib Haz Zone - Cam 2 & Cib Haz Sands COMBINED  
Sturlese, 2nd POST APPL. CONF.: NOVEMBER 7, 2018, Cib Haz Sand ONLY  
Groves/Sturlese/Wms., 3rd CONF.: DECEMBER 13, 2018, Marg-Cam Zone, Cam 2 Sd, Cib. hazz. Sd.  
Groves/Sturlese/Wms., 4th CONF.: DECEMBER 20, 2018, Marg-Cam Zone, Cam 1-2 Zone, Cib. hazz. Sd.  
HEARING DATE: FEBRUARY 19, 2019

EXHIBIT NO. 7A  
DOCKET NOS. 19-88 Thru 90 DATE: 2-19-19

**EXCALIBUR LAND COMPANY**

HOLMWOOD FIELD  
CALCASIEU PARISH, LOUISIANA

LINE OF SECTION  
A-A'

0 1000' 2000'

**BRYAN GROVES**  
OIL & GAS GEOLOGIST  
www.bryangrovesgeology.com



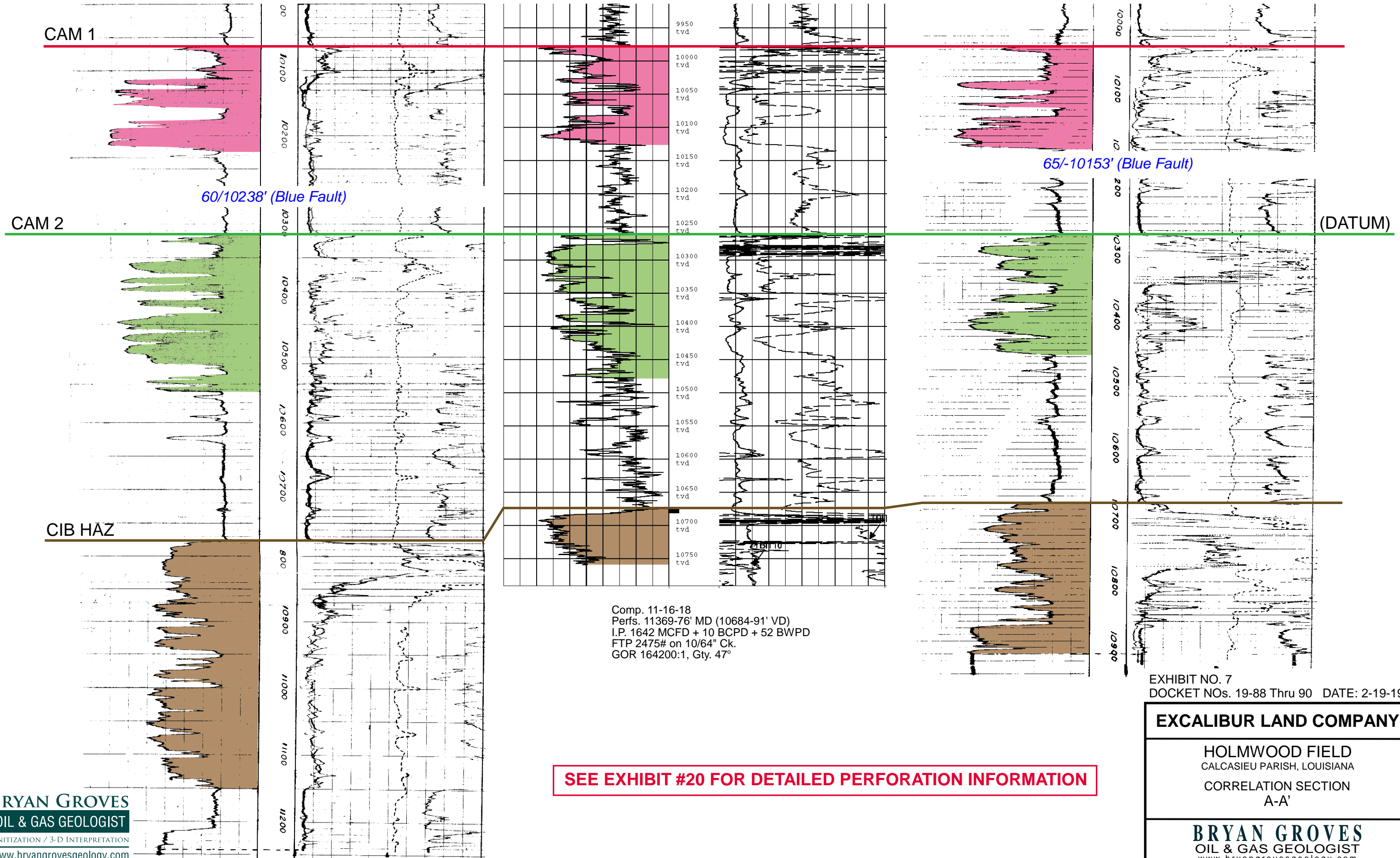
**A**  
**WEST**

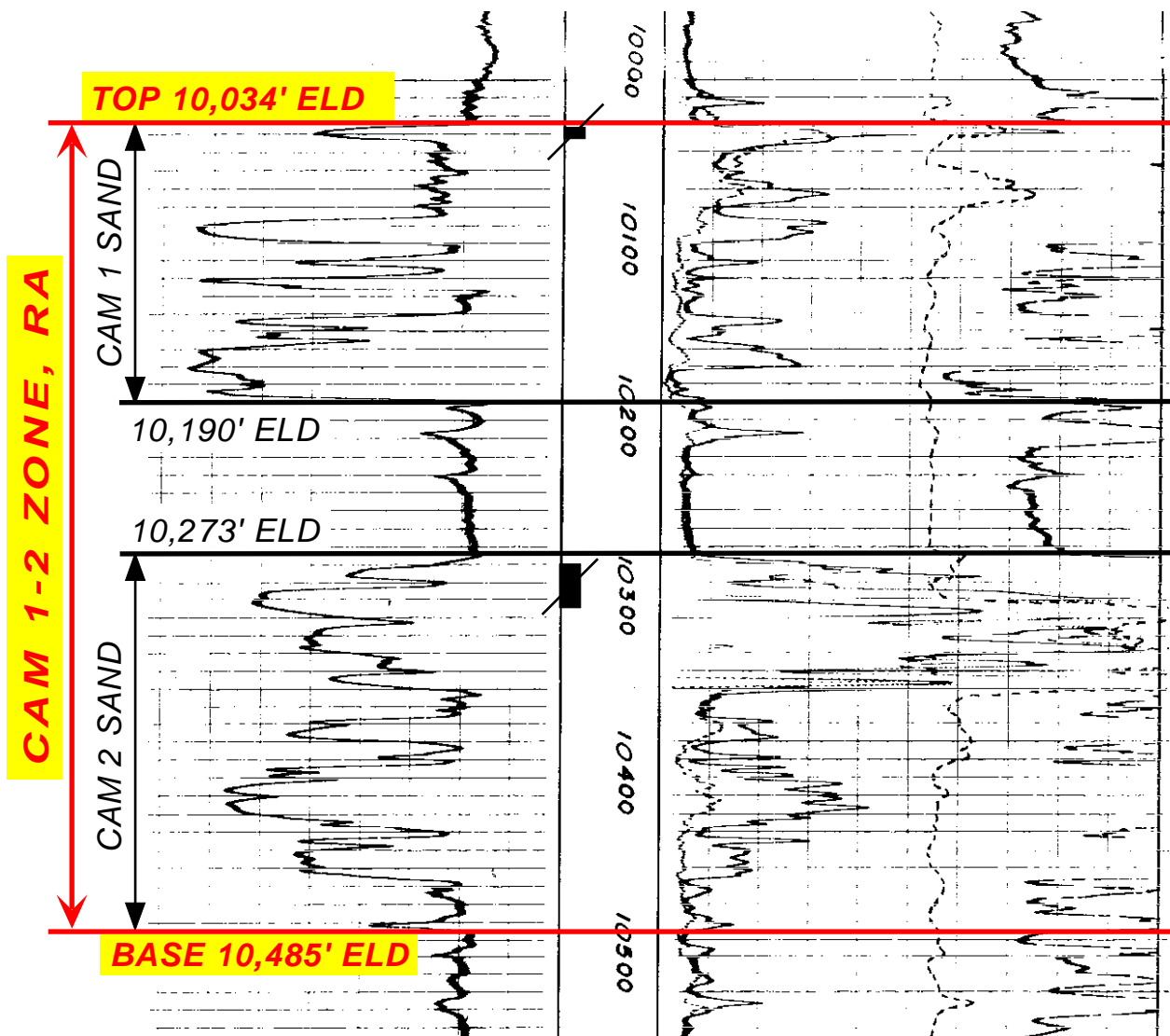
Sohio Petroleum Company  
Farmers Ld. & Canal #B-1(2)  
Serial No. 32380

C6 Operaitng, LLC  
Excalibur Ld. #1  
Serial No. 251068

Sohio Petroleum Company  
W. E. Walker #1  
Serial No. 32994

**A'**  
**EAST**





Comp. 5-10-47 (#1)  
 Perfs. 10280-305'  
 I.P. 215 BOPD + 151 MCFD  
 FTP 1550# on 7/64" Ck.  
 GOR 703:1, Gty. 37.4°

Comp. 9-12-64 (#1-D)  
 Perf'd. 10037-43'  
 I.P. 196 BOPD + 125 MCFD  
 FTP 1000# on 8/64" Ck.  
 GOR 637:1, Gty. 40.2°

P & A 8-16-85

EXHIBIT NO. 8  
 DOCKET NOs. 19-88 Thru 90 DATE: 2-19-19

**EXCALIBUR LAND COMPANY**

HOLMWOOD FIELD  
 CALCASIEU PARISH, LOUISIANA

**DEFINITION LOG**  
**Cam 1-2 Zone**

R 7 W

T  
10  
S

HIGHER  
PRIMARY  
STRUCTURE

LOWER  
SECONDARY  
STRUCTURE

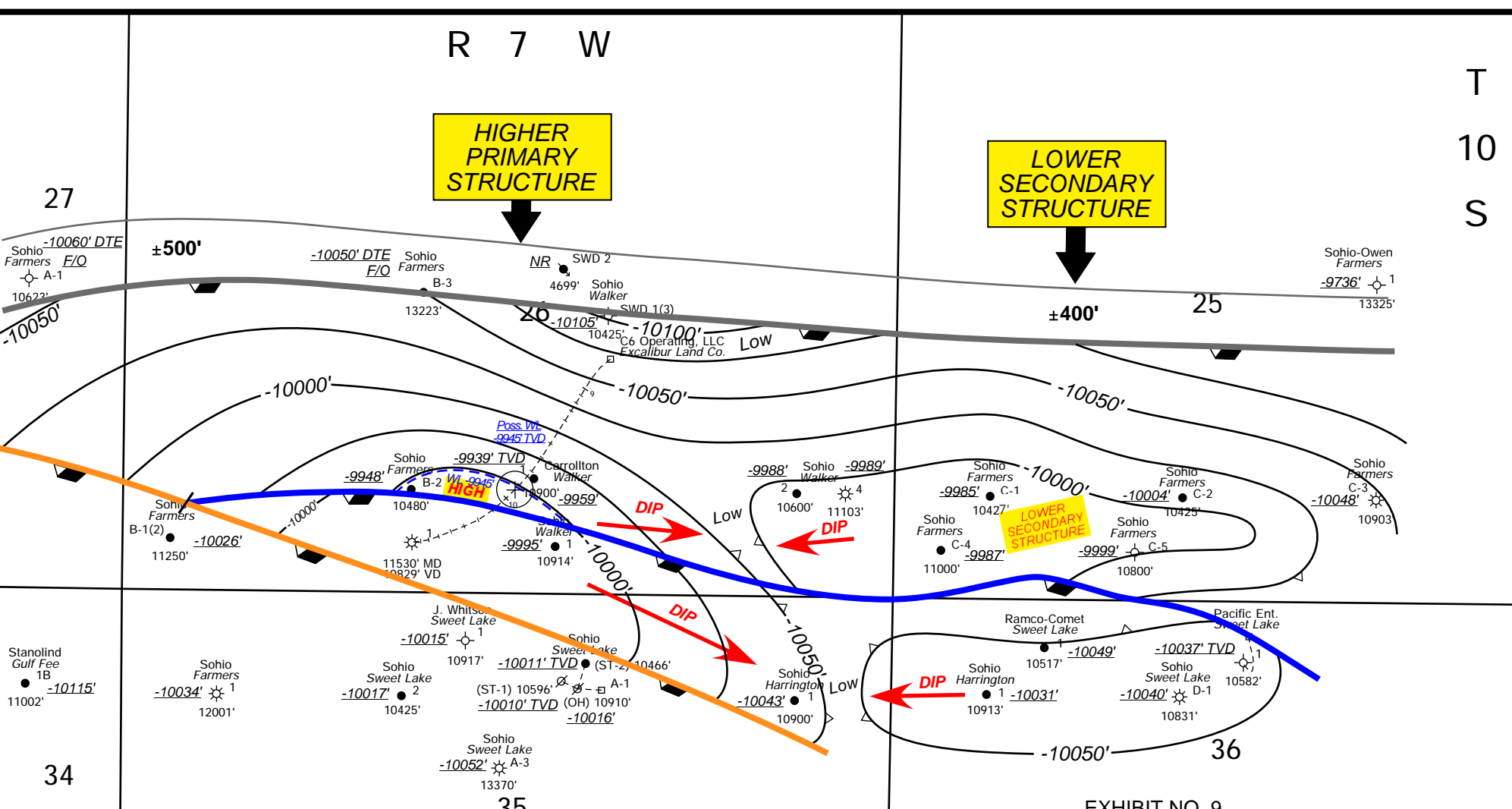
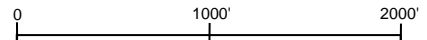


EXHIBIT NO. 9  
DOCKET NOs. 19-88 Thru 90 DATE: 2-19-19

**EXCALIBUR LAND COMPANY**

HOLMWOOD FIELD  
CALCASIEU PARISH, LOUISIANA  
STRUCTURE MAP  
CAM 1 SAND  
C.I: 25'



**BRYAN GROVES**  
OIL & GAS GEOLOGIST  
www.bryangrovesgeology.com

**BRYAN GROVES**  
OIL & GAS GEOLOGIST  
UNITIZATION / 3-D INTERPRETATION  
www.bryangrovesgeology.com

Sturlese, 1st PRE-APPL. CONF.: OCTOBER 3, 2018, Cib Hazz Zone - Cam 2 & Cib Hazz Sands COMBINED  
Sturlese, 2nd POST APPL. CONF.: NOVEMBER 7, 2018, Cib Hazz Sand ONLY  
Groves/Sturlese/Wms., 3rd CONF.: DECEMBER 13, 2018, Marg-Cam Zone, Cam 2 Sd, Cib. hazz. Sd.  
Groves/Sturlese/Wms., 4th CONF.: DECEMBER 20, 2018, Marg-Cam Zone, Cam 1-2 Zone, Cib. hazz. Sd.  
HEARING DATE: FEBRUARY 19, 2019

R 7 W

T  
10  
S

27

Sohio  
Farmers  
A-1  
10623'

Excalibur Land Company

Sohio  
Farmers  
B-3  
13223'

26

Walker Louisiana Properties, LLC

SWD 2  
4699'  
Sohio  
Walker  
SWD 1(3)  
10425'  
C6 Operating, LLC  
Excalibur Land Co.

Excalibur Land Company

25

Sohio-Owen  
Farmers  
1  
13325'

Sohio  
Farmers  
B-2  
10480'  
1  
11530' MD  
10829' VD

Carrollton  
Walker  
1  
10900'  
Sohio  
Walker  
1  
10914'

Sohio  
Walker  
2  
10600'  
4  
11103'

Sohio  
Farmers  
C-1  
10427'  
Sohio  
Walker  
C-4  
11000'

Sohio  
Farmers  
C-2  
10425'  
Sohio  
Farmers  
C-5  
10800'

Sohio  
Farmers  
C-3  
10903'

Stanolind  
Gulf Fee  
1B  
11002'

Mallet

Excalibur Land  
Company

Sohio  
Farmers  
1  
12001'

J. Whitson  
Sweet Lake  
1  
10917'  
Sohio  
Sweet Lake  
2  
10425'  
(ST-1) 10596'  
Sohio  
Sweet Lake  
A-3  
13370'

Sohio  
Sweet Lake  
(ST-2) 10466'  
A-1  
(OH) 10910'

Otto Harrington, et al

Sohio  
Harrington  
1  
10900'

Ramco-Comet  
Sweet Lake  
1  
10517'

Sohio  
Harrington  
1  
10913'

Pacific Ent.  
Sweet Lake  
1  
10582'  
Sohio  
Sweet Lake  
D-1  
10831'

36

34

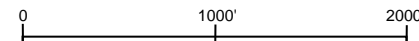
35

Sweet Lake Land & Oil Co.

EXHIBIT NO. 10  
DOCKET NOs. 19-88 Thru 90 DATE: 2-19-19

### EXCALIBUR LAND COMPANY

HOLMWOOD FIELD  
CALCASIEU PARISH, LOUISIANA  
PRODUCTIVE OUTLINE  
CAM 1 SAND



**BRYAN GROVES**  
OIL & GAS GEOLOGIST  
www.bryangrovesgeology.com

**BRYAN GROVES**

OIL & GAS GEOLOGIST

UNITIZATION / 3-D INTERPRETATION

www.bryangrovesgeology.com

Sturlese, 1st PRE-APPL. CONF.: OCTOBER 3, 2018, Cib Hazz Zone - Cam 2 & Cib Hazz Sands COMBINED  
Sturlese, 2nd POST APPL. CONF.: NOVEMBER 7, 2018, Cib Hazz Sand ONLY  
Groves/Sturlese/Wms., 3rd CONF.: DECEMBER 13, 2018, Marg-Cam Zone, Cam 2 Sd, Cib. hazz. Sd.  
Groves/Sturlese/Wms., 4th CONF.: DECEMBER 20, 2018, Marg-Cam Zone, Cam 1-2 Zone, Cib. hazz. Sd.  
HEARING DATE: FEBRUARY 19, 2019

R 7 W

T  
10  
S

27

**HIGHER  
PRIMARY  
STRUCTURE**

**LOWER  
SECONDARY  
STRUCTURE**

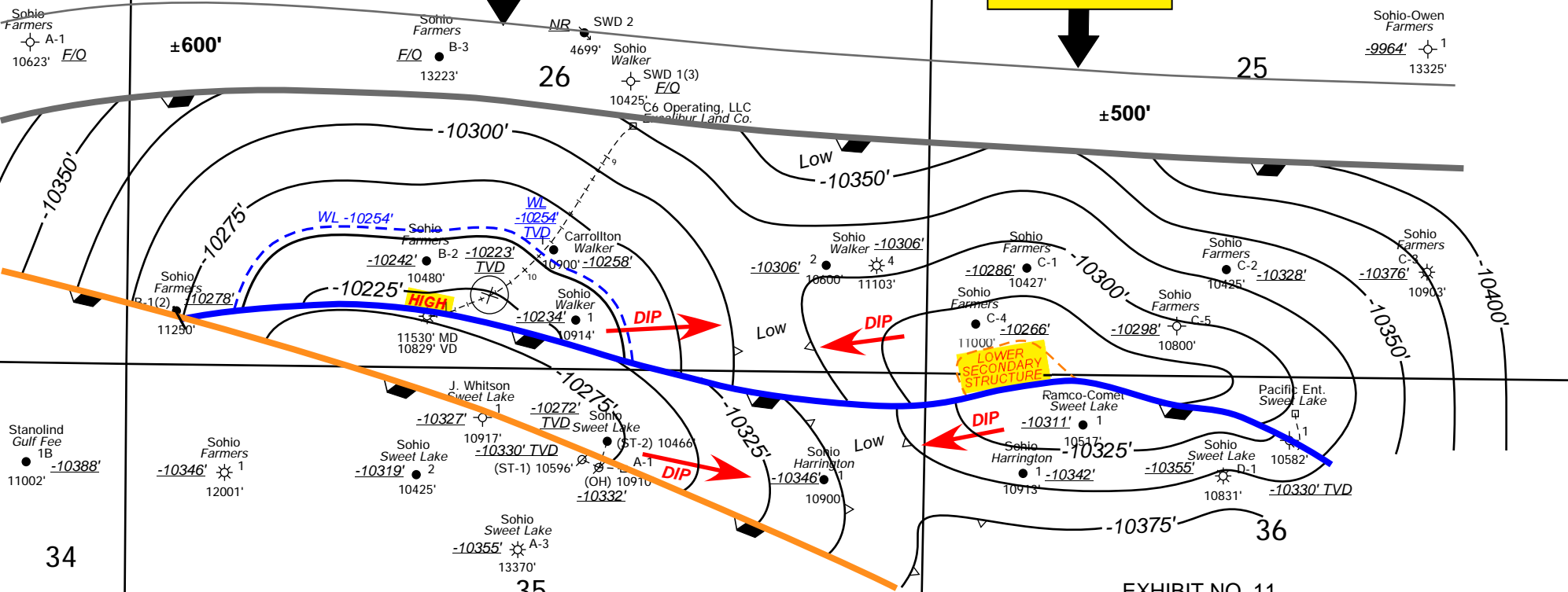
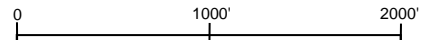


EXHIBIT NO. 11  
DOCKET NOS. 19-88 Thru 90 DATE: 2-19-19

**EXCALIBUR LAND COMPANY**

HOLMWOOD FIELD  
CALCASIEU PARISH, LOUISIANA  
STRUCTURE MAP  
CAM 2 SAND  
C.I: 25'



**BRYAN GROVES**  
OIL & GAS GEOLOGIST  
www.bryangrovesgeology.com

**BRYAN GROVES**  
OIL & GAS GEOLOGIST  
UNITIZATION / 3-D INTERPRETATION  
www.bryangrovesgeology.com

Sturlese, 1st PRE-APPL. CONF.: OCTOBER 3, 2018, Cib Hazz Zone - Cam 2 & Cib Hazz Sands COMBINED  
Sturlese, 2nd POST APPL. CONF.: NOVEMBER 7, 2018, Cib Hazz Sand ONLY  
Groves/Sturlese/Wms., 3rd CONF.: DECEMBER 13, 2018, Marg-Cam Zone, Cam 2 Sd, Cib. hazz. Sd.  
Groves/Sturlese/Wms., 4th CONF.: DECEMBER 20, 2018, Marg-Cam Zone, Cam 1-2 Zone, Cib. hazz. Sd.  
HEARING DATE: FEBRUARY 19, 2019

R 7 W

T  
10  
S

27

Sohio  
Farmers  
A-1  
10623'

Excalibur Land Company

Sohio  
Farmers  
B-3  
13223'

26

Walker Louisiana Properties, LLC

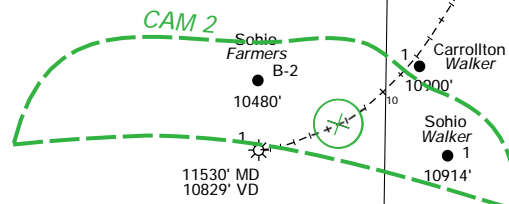
SWD 2  
4699'  
Sohio  
Walker  
SWD 1(3)  
10425'

C6 Operating, LLC  
Excalibur Land Co.

Excalibur Land Company

25

Sohio-Owen  
Farmers  
1  
13325'



Sohio  
Farmers  
B-1(2)  
11250'

Sohio  
Farmers  
B-2  
10480'

1  
Carrollton  
Walker  
10900'

Sohio  
Walker  
2  
10600'

4  
11103'

Sohio  
Walker  
1  
10914'

11530' MD  
10829' VD

Sohio  
Farmers  
C-1  
10427'

Sohio  
Farmers  
C-2  
10425'

Sohio  
Farmers  
C-3  
10903'

Sohio  
Farmers  
C-4  
11000'

Sohio  
Farmers  
C-5  
10800'

Stanolind  
Gulf Fee  
1B  
11002'

Mallet

Excalibur Land  
Company

Sohio  
Farmers  
1  
12001'

J. Whitson  
Sweet Lake  
1  
10917'

Sohio  
Sweet Lake  
2  
10425'

(ST-1) 10596'

Sohio  
Sweet Lake  
(ST-2) 10466'  
A-1  
(OH) 10910'

Otto Harrington, et al

Sohio  
Harrington  
1  
10900'

Ramco-Comet  
Sweet Lake  
1  
10517'

Sohio  
Harrington  
1  
10913'

Pacific Ent.  
Sweet Lake  
1  
10582'

Sohio  
Sweet Lake  
D-1  
10831'

34

35

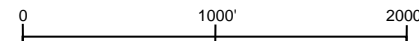
Sweet Lake Land & Oil Co.

36

EXHIBIT NO. 12  
DOCKET NOs. 19-88 Thru 90 DATE: 2-19-19

### EXCALIBUR LAND COMPANY

HOLMWOOD FIELD  
CALCASIEU PARISH, LOUISIANA  
PRODUCTIVE OUTLINE  
CAM 2 SAND



**BRYAN GROVES**  
OIL & GAS GEOLOGIST  
www.bryangrovesgeology.com

**BRYAN GROVES**  
OIL & GAS GEOLOGIST

UNITIZATION / 3-D INTERPRETATION

www.bryangrovesgeology.com

Sturlese, 1st PRE-APPL. CONF.: OCTOBER 3, 2018, Cib Hazz Zone - Cam 2 & Cib Hazz Sands COMBINED  
Sturlese, 2nd POST APPL. CONF.: NOVEMBER 7, 2018, Cib Hazz Sand ONLY  
Groves/Sturlese/Wms., 3rd CONF.: DECEMBER 13, 2018, Marg-Cam Zone, Cam 2 Sd, Cib. hazz. Sd.  
Groves/Sturlese/Wms., 4th CONF.: DECEMBER 20, 2018, Marg-Cam Zone, Cam 1-2 Zone, Cib. hazz. Sd.  
HEARING DATE: FEBRUARY 19, 2019

R 7 W

T  
10  
S

27

Sohio  
Farmers  
A-1  
10623'

Excalibur Land Company

Sohio  
Farmers  
B-3  
13223'

26

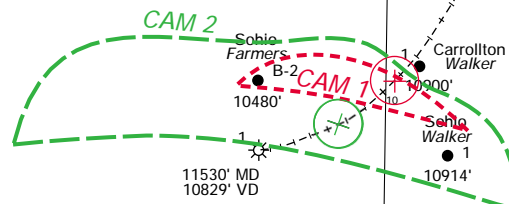
Walker Louisiana Properties, LLC

SWD 2  
4699'  
Sohio  
Walker  
SWD 1(3)  
10425'  
C6 Operating, LLC  
Excalibur Land Co.

Excalibur Land Company

25

Sohio-Owen  
Farmers  
1  
13325'



Sohio  
Farmers  
B-1(2)  
11250'

Sohio  
Farmers  
B-2  
10480'

Carrollton  
Walker  
1  
10900'  
Sohio  
Walker  
1  
10914'

Sohio  
Walker  
2  
10600'  
4  
11103'

Sohio  
Farmers  
C-1  
10427'  
Sohio  
Farmers  
C-4  
11000'

Sohio  
Farmers  
C-2  
10425'  
Sohio  
Farmers  
C-5  
10800'

Sohio  
Farmers  
C-3  
10903'

Stanolind  
Gulf Fee  
1B  
11002'

Mallet

Excalibur Land  
Company

Sohio  
Farmers  
1  
12001'

Sohio  
Sweet Lake  
2  
10425'

J. Whitson  
Sweet Lake  
1  
10917'

Sohio  
Sweet Lake  
(ST-2) 10466'  
A-1  
(OH) 10910'

Sohio  
Sweet Lake  
A-3  
13370'

Otto Harrington, et al

Sohio  
Harrington  
1  
10900'

Ramco-Comet  
Sweet Lake  
1  
10517'

Sohio  
Harrington  
1  
10913'

Pacific Ent.  
Sweet Lake  
1  
10582'  
Sohio  
Sweet Lake  
D-1  
10831'

36

34

35

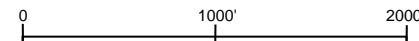
Sweet Lake Land & Oil Co.

EXHIBIT NO. 13  
DOCKET NOs. 19-88 Thru 90 DATE: 2-19-19

**EXCALIBUR LAND COMPANY**

HOLMWOOD FIELD  
CALCASIEU PARISH, LOUISIANA

COMPOSITE PRODUCTIVE OUTLINES  
CAM 1-2 ZONE



**BRYAN GROVES**  
OIL & GAS GEOLOGIST  
www.bryangrovesgeology.com

**BRYAN GROVES**

**OIL & GAS GEOLOGIST**

UNITIZATION / 3-D INTERPRETATION

www.bryangrovesgeology.com

Sturlese, 1st PRE-APPL. CONF.: OCTOBER 3, 2018, Cib Hazz Zone - Cam 2 & Cib Hazz Sands COMBINED  
Sturlese, 2nd POST APPL. CONF.: NOVEMBER 7, 2018, Cib Hazz Sand ONLY  
Groves/Sturlese/Wms., 3rd CONF.: DECEMBER 13, 2018, Marg-Cam Zone, Cam 2 Sd, Cib. hazz. Sd.  
Groves/Sturlese/Wms., 4th CONF.: DECEMBER 20, 2018, Marg-Cam Zone, Cam 1-2 Zone, Cib. hazz. Sd.  
HEARING DATE: FEBRUARY 19, 2019

R 7 W

T  
10  
S

27

Sohio  
Farmers  
A-1  
10623'

Excalibur Land Company

Sohio  
Farmers  
B-3  
13223'

26

Walker Louisiana Properties, LLC

SWD 2  
4699'  
Sohio  
Walker  
SWD 1(3)  
10425'

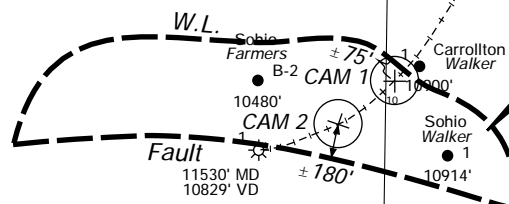
C6 Operating, LLC  
Excalibur Land Co.

CAM 1-2 RA SUA  
Excalibur Land No. 1  
± 30 ACRES

Excalibur Land Company

25

Sohio-Owen  
Farmers  
1  
13325'



Sohio  
Farmers  
B-1(2)  
11250'

Sohio  
Farmers  
B-2  
10480'

Carrollton  
Walker  
1  
10900'

Sohio  
Walker  
2  
10600'

Sohio  
Walker  
4  
11103'

Sohio  
Farmers  
C-1  
10427'

Sohio  
Farmers  
C-2  
10425'

Sohio  
Farmers  
C-3  
10903'

Sohio  
Farmers  
C-4  
11000'

Sohio  
Farmers  
C-5  
10800'

Stanolind  
Gulf Fee  
1B  
11002'

Mallet

Excalibur Land  
Company

Sohio  
Farmers  
1  
12001'

J. Whitson  
Sweet Lake  
1  
10917'

Sohio  
Sweet Lake  
2  
10425'

(ST-1) 10596'

Sohio  
Sweet Lake  
(ST-2) 10466'  
A-1  
(OH) 10910'

Otto Harrington, et al

Sohio  
Harrington  
1  
10900'

Ramco-Comet  
Sweet Lake  
1  
10517'

Sohio  
Harrington  
1  
10913'

Pacific Ent.  
Sweet Lake  
1  
10582'

Sohio  
Sweet Lake  
D-1  
10831'

34

35

Sweet Lake Land & Oil Co.

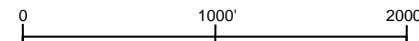
36

EXHIBIT NO. 14  
DOCKET NOs. 19-88 Thru 90 DATE: 2-19-19

**EXCALIBUR LAND COMPANY**

HOLMWOOD FIELD  
CALCASIEU PARISH, LOUISIANA

PROPOSED UNIT  
CAM 1-2 ZONE



**BRYAN GROVES**  
OIL & GAS GEOLOGIST  
www.bryangrovesgeology.com

**BRYAN GROVES**

**OIL & GAS GEOLOGIST**

UNITIZATION / 3-D INTERPRETATION

www.bryangrovesgeology.com

Sturlese, 1st PRE-APPL. CONF.: OCTOBER 3, 2018, Cib Hazz Zone - Cam 2 & Cib Hazz Sands COMBINED  
Sturlese, 2nd POST APPL. CONF.: NOVEMBER 7, 2018, Cib Hazz Sand ONLY  
Groves/Sturlese/Wms., 3rd CONF.: DECEMBER 13, 2018, Marg-Cam Zone, Cam 2 Sd, Cib. hazz. Sd.  
Groves/Sturlese/Wms., 4th CONF.: DECEMBER 20, 2018, Marg-Cam Zone, Cam 1-2 Zone, Cib. hazz. Sd.  
HEARING DATE: FEBRUARY 19, 2019



R 7 W

27

T  
10  
S

Sohio  
Farmers  
A-1  
10623'

Stanolind  
Gulf Fee  
1B  
11002'

34

Mallet  
Sohio  
Farmers  
1  
12001'

Excalibur Land Company

Excalibur Land Company

Sohio  
Farmers  
B-3  
13223'

Sohio  
Sweet Lake  
2  
10425'

26

Sweet Lake Land & Oil Co.

35

SWD 2  
4699'  
Sohio  
Walker  
SWD 1(3)  
10425'  
C6 Operating, LLC  
Excalibur Land Co.

Walker Louisiana Properties, LLC

J. Whitson  
Sweet Lake  
1  
10917'  
Sohio  
Sweet Lake  
(ST-1) 10596'  
Sohio  
Sweet Lake  
(ST-2) 10466'  
A-1  
(OH) 10910'

Otto Harrington, et al

Sohio  
Harrington  
1  
10900'

- EXCALIBUR LAND COMPANY  
CAM 1-2 RA SUA (±30 ACRES)
- SWEET LAKE LAND & OIL CO.  
CAM 1-2 RA SUA (±22 ACRES)
- HARRINGTON, ET AL  
CAM 1-2 RA SUA (±39 ACRES)
- C6 OPERATING, LLC  
MARG-CAM RA SUA (±80 ACRES)

25

13325'

Excalibur Land Company

Sohio  
Farmers  
C-1  
10427'  
Sohio  
Farmers  
C-4  
11000'

Sohio  
Farmers  
C-2  
10425'  
Sohio  
Farmers  
C-5  
10800'

Sohio  
Farmers  
C-3  
10903'

Ramco-Comet  
Sweet Lake  
1  
10517'  
Sohio  
Harrington  
1  
10913'

Pacific Ent.  
Sweet Lake  
1  
10582'  
Sohio  
Sweet Lake  
D-1  
10831'

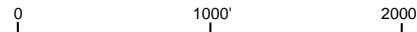
36

EXHIBIT NO. 15  
DOCKET NOs. 19-88 Thru 90 DATE: 2-19-19

### EXCALIBUR LAND COMPANY

HOLMWOOD FIELD  
CALCASIEU PARISH, LOUISIANA

UNIT COMPARISON  
CAM 1-2 ZONE



**BRYAN GROVES**  
OIL & GAS GEOLOGIST  
www.bryangrovesgeology.com

**BRYAN GROVES**  
OIL & GAS GEOLOGIST  
UNITIZATION / 3-D INTERPRETATION  
www.bryangrovesgeology.com

Sturlese, 1st PRE-APPL. CONF.: OCTOBER 3, 2018, Cib Hazz Zone - Cam 2 & Cib Hazz Sands COMBINED  
Sturlese, 2nd POST APPL. CONF.: NOVEMBER 7, 2018, Cib Hazz Sand ONLY  
Groves/Sturlese/Wms., 3rd CONF.: DECEMBER 13, 2018, Marg-Cam Zone, Cam 2 Sd, Cib. hazz. Sd.  
Groves/Sturlese/Wms., 4th CONF.: DECEMBER 20, 2018, Marg-Cam Zone, Cam 1-2 Zone, Cib. hazz. Sd.  
HEARING DATE: FEBRUARY 19, 2019

R 7 W

27

T  
10  
S

- **EXCALIBUR LAND COMPANY**  
**CAM 1-2 RA SUA (±30 ACRES)**
- **SWEET LAKE LAND & OIL CO.**  
**CAM 1-2 RA SUA (±22 ACRES)**
- **HARRINGTON, ET AL**  
**CAM 1-2 RA SUA (±39 ACRES)**
- **C6 OPERATING, LLC**  
**MARG-CAM RA SUA (±80 ACRES)**

25

13325'

Sohio  
Farmers  
A-1  
10623'

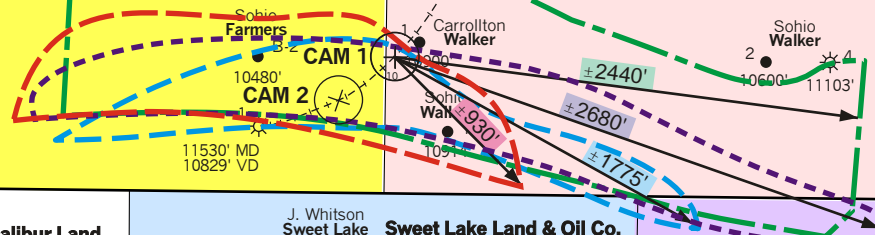
Sohio  
Farmers  
B-3  
13223'

26

SWD 2  
4699'  
Sohio  
Walker  
SWD 1(3)  
10425'  
C6 Operating, LLC  
Excalibur Land Co.

**Excalibur Land Company**  
**WELL SITE TRACT**

**Walker Louisiana Properties, LLC**



**Excalibur Land Company**

Sohio  
Farmers  
C-1  
10427'  
Sohio  
Farmers  
C-4  
11000'

Sohio  
Farmers  
C-2  
10425'  
Sohio  
Farmers  
C-5  
10800'

Sohio  
Farmers  
C-3  
10903'

Stanolind  
Gulf Fee  
1B  
11002'

Mallet

**Excalibur Land Company**  
Sohio  
Farmers  
1  
12001'

**Sweet Lake Land & Oil Co.**  
J. Whitson  
Sweet Lake  
10917'  
Sohio  
Sweet Lake  
(ST-1) 10596'  
Sohio  
Sweet Lake  
(ST-2) 10466'  
Sohio  
Sweet Lake  
(OH) 10910'  
Sohio  
Sweet Lake  
A-3  
13370'

**Otto Harrington, et al**  
Sohio  
Harrington  
1  
10900'

Ramco-Comet  
Sweet Lake  
1  
10517'  
Sohio  
Harrington  
1  
10913'

Pacific Ent.  
Sweet Lake  
1  
10582'  
Sohio  
Sweet Lake  
D-1  
10831'

36

34

35

EXHIBIT NO. 15-A  
DOCKET NOs. 19-88 Thru 90 DATE: 2-19-19

**EXCALIBUR LAND COMPANY**

**HOLMWOOD FIELD**  
CALCASIEU PARISH, LOUISIANA

**UNIT COMPARISON**  
**CAM 1-2 ZONE**



**BRYAN GROVES**  
**OIL & GAS GEOLOGIST**  
www.bryangrovesgeology.com

**BRYAN GROVES**  
**OIL & GAS GEOLOGIST**  
UNITIZATION / 3-D INTERPRETATION  
www.bryangrovesgeology.com

Sturlese, 1st PRE-APPL. CONF.: OCTOBER 3, 2018, Cib Hazz Zone - Cam 2 & Cib Hazz Sands COMBINED  
Sturlese, 2nd POST APPL. CONF.: NOVEMBER 7, 2018, Cib Hazz Sand ONLY  
Groves/Sturlese/Wms., 3rd CONF.: DECEMBER 13, 2018, Marg-Cam Zone, Cam 2 Sd, Cib. hazz. Sd.  
Groves/Sturlese/Wms., 4th CONF.: DECEMBER 20, 2018, Marg-Cam Zone, Cam 1-2 Zone, Cib. hazz. Sd.  
HEARING DATE: FEBRUARY 19, 2019

R 7 W

T  
10  
S

27

**HIGHER  
PRIMARY  
STRUCTURE**

**LOWER  
SECONDARY  
STRUCTURE**

25

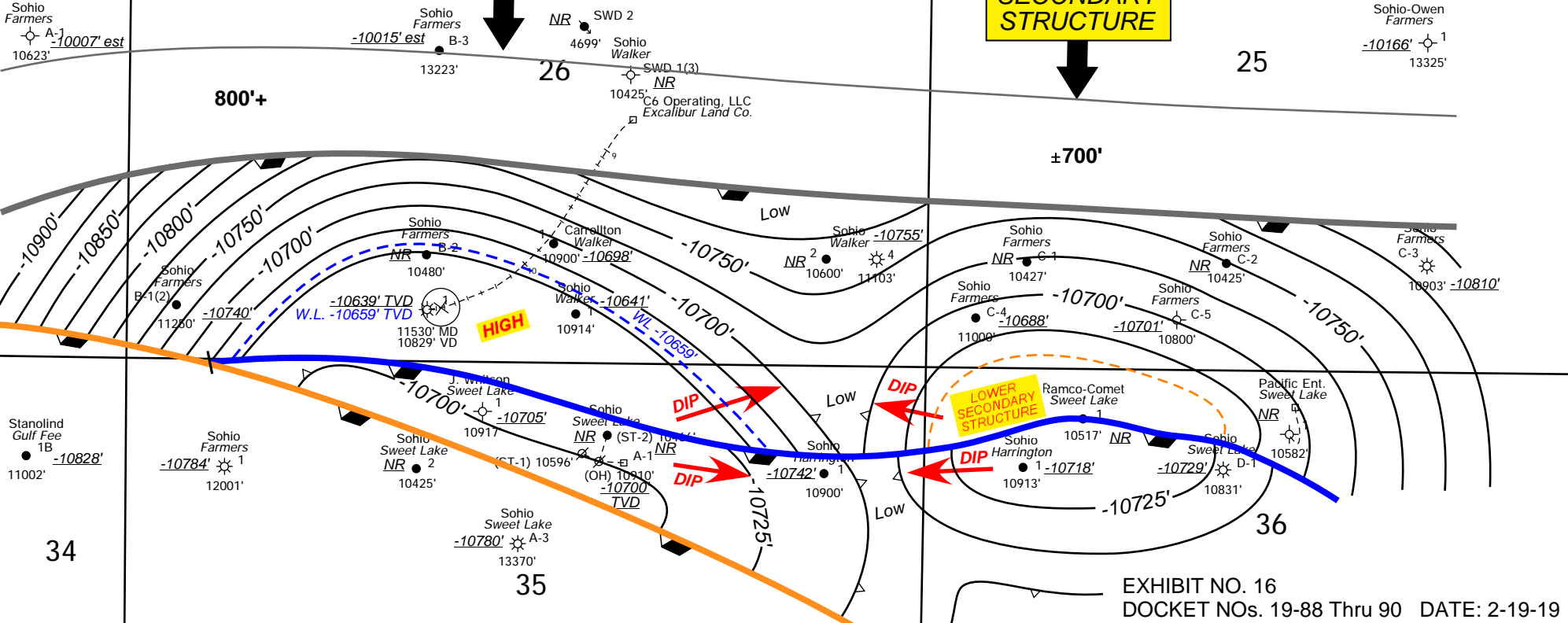
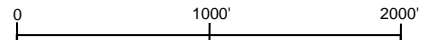


EXHIBIT NO. 16  
DOCKET NOS. 19-88 Thru 90 DATE: 2-19-19

**EXCALIBUR LAND COMPANY**

HOLMWOOD FIELD  
CALCASIEU PARISH, LOUISIANA  
STRUCTURE MAP  
CIB HAZ SAND  
C.I.: 25'



**BRYAN GROVES**  
OIL & GAS GEOLOGIST  
www.bryangrovesgeology.com

**BRYAN GROVES**  
OIL & GAS GEOLOGIST  
UNITIZATION / 3-D INTERPRETATION  
www.bryangrovesgeology.com

Sturlese, 1st PRE-APPL. CONF.: OCTOBER 3, 2018, Cib Haz Zone - Cam 2 & Cib Haz Sands COMBINED  
Sturlese, 2nd POST APPL. CONF.: NOVEMBER 7, 2018, Cib Haz Sand ONLY  
Groves/Sturlese/Wms., 3rd CONF.: DECEMBER 13, 2018, Marg-Cam Zone, Cam 2 Sd, Cib. hazz. Sd.  
Groves/Sturlese/Wms., 4th CONF.: DECEMBER 20, 2018, Marg-Cam Zone, Cam 1-2 Zone, Cib. hazz. Sd.  
HEARING DATE: FEBRUARY 19, 2019

R 7 W

T  
10  
S

27

25

26

36

34

35

Sohio  
Farmers  
A-1  
10623'

Sohio  
Farmers  
B-3  
13223'

Walker Louisiana Properties, LLC  
SWD 2  
4699'  
Sohio  
Walker  
SWD 1(3)  
10425'

Sohio-Owen  
Farmers  
1  
13325'

Excalibur Land Company

Excalibur Land Company

**CIB H RA SUA  
Excalibur Land No. 1  
± 48 ACRES**

C6 Operating, LLC  
Excalibur Land Co.

Sohio  
Farmers  
B-2  
10480'

1  
Carrollton  
Walker  
10900'

Sohio  
Walker  
2  
10600'

4  
11103'

Sohio  
Farmers  
B-1(2)  
11250'

1  
11530' MD  
10829' VD  
± 400'

Sohio  
Walker  
1  
10914'

Sohio  
Farmers  
C-1  
10427'

Sohio  
Farmers  
C-2  
10425'

Sohio  
Farmers  
C-3  
10903'

Sohio  
Farmers  
C-4  
11000'

Sohio  
Farmers  
C-5  
10800'

Stanolind  
Gulf Fee  
1B  
11002'

Mallet

Excalibur Land Company

Fault

J. Wilkinson  
Sweet Lake  
1  
10917'

Sohio  
Sweet Lake  
(ST-2)  
10464'

Otto Harrington, et al

Sohio  
Harrington  
1  
10900'

Ramco-Comet  
Sweet Lake  
1  
10517'

Pacific Ent.  
Sweet Lake  
1  
10582'

Sohio  
Farmers  
1  
12001'

Sohio  
Sweet Lake  
2  
10425'

Sohio  
Sweet Lake  
A-3  
13370'

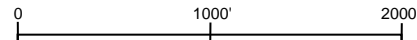
Sohio  
Sweet Lake  
D-1  
10831'

EXHIBIT NO. 17  
DOCKET NOs. 19-88 Thru 90 DATE: 2-19-19

**EXCALIBUR LAND COMPANY**

HOLMWOOD FIELD  
CALCASIEU PARISH, LOUISIANA

PROPOSED UNIT  
CIB HAZ SAND



**BRYAN GROVES**  
OIL & GAS GEOLOGIST  
www.bryangrovesgeology.com

**BRYAN GROVES**  
OIL & GAS GEOLOGIST  
UNITIZATION / 3-D INTERPRETATION  
www.bryangrovesgeology.com

Sturlese, 1st PRE-APPL. CONF.: OCTOBER 3, 2018, Cib Hazz Zone - Cam 2 & Cib Hazz Sands COMBINED  
Sturlese, 2nd POST APPL. CONF.: NOVEMBER 7, 2018, Cib Hazz Sand ONLY  
Groves/Sturlese/Wms., 3rd CONF.: DECEMBER 13, 2018, Marg-Cam Zone, Cam 2 Sd, Cib. hazz. Sd.  
Groves/Sturlese/Wms., 4th CONF.: DECEMBER 20, 2018, Marg-Cam Zone, Cam 1-2 Zone, Cib. hazz. Sd.  
HEARING DATE: FEBRUARY 19, 2019

R 7 W

T 10 S

27

26

25

34

35

36

--- **EXCALIBUR LAND COMPANY**  
 CIB H RA SUA (±48 ACRES)  
--- **SWEET LAKE LAND & OIL CO.**  
 CIB H RA SUA (±40 ACRES)  
--- **HARRINGTON, ET AL**  
 CIB H RA SUA (±55 ACRES)  
--- **C6 OPERATING, LLC**  
 CIB H RA SUA (±51 ACRES)

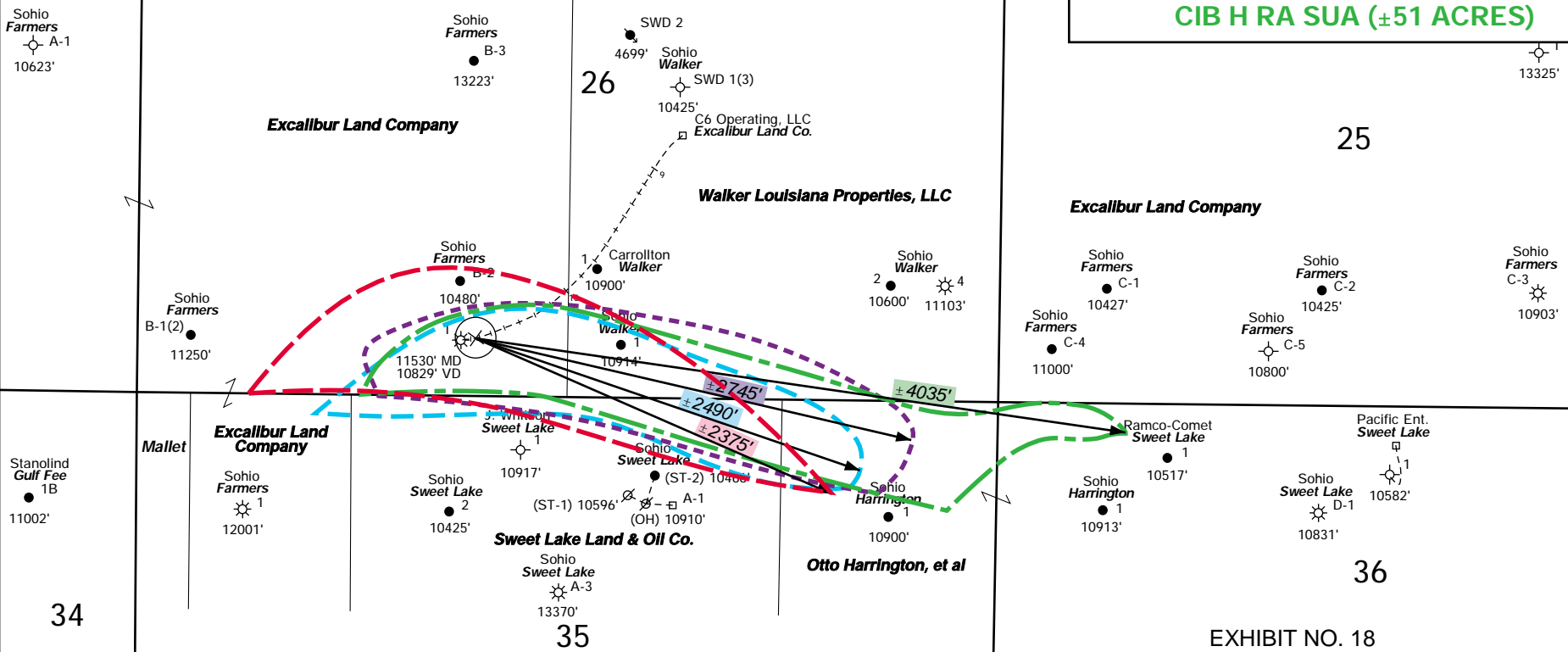


EXHIBIT NO. 18  
 DOCKET NOS. 19-88 Thru 90 DATE: 2-19-19

**EXCALIBUR LAND COMPANY**

---

**HOLMWOOD FIELD**  
 CALCASIEU PARISH, LOUISIANA  
  
 UNIT COMPARISON  
 CIB HAZ SAND

---

**BRYAN GROVES**  
 OIL & GAS GEOLOGIST  
 www.bryangrovesgeology.com

R 7 W

T 10 S

27

26

25

34

35

36

--- **EXCALIBUR LAND COMPANY**  
CIB H RA SUA (±48 ACRES)  
--- **SWEET LAKE LAND & OIL CO.**  
CIB H RA SUA (±40 ACRES)  
--- **HARRINGTON, ET AL**  
CIB H RA SUA (±55 ACRES)  
--- **C6 OPERATING, LLC**  
CIB H RA SUA (±51 ACRES)

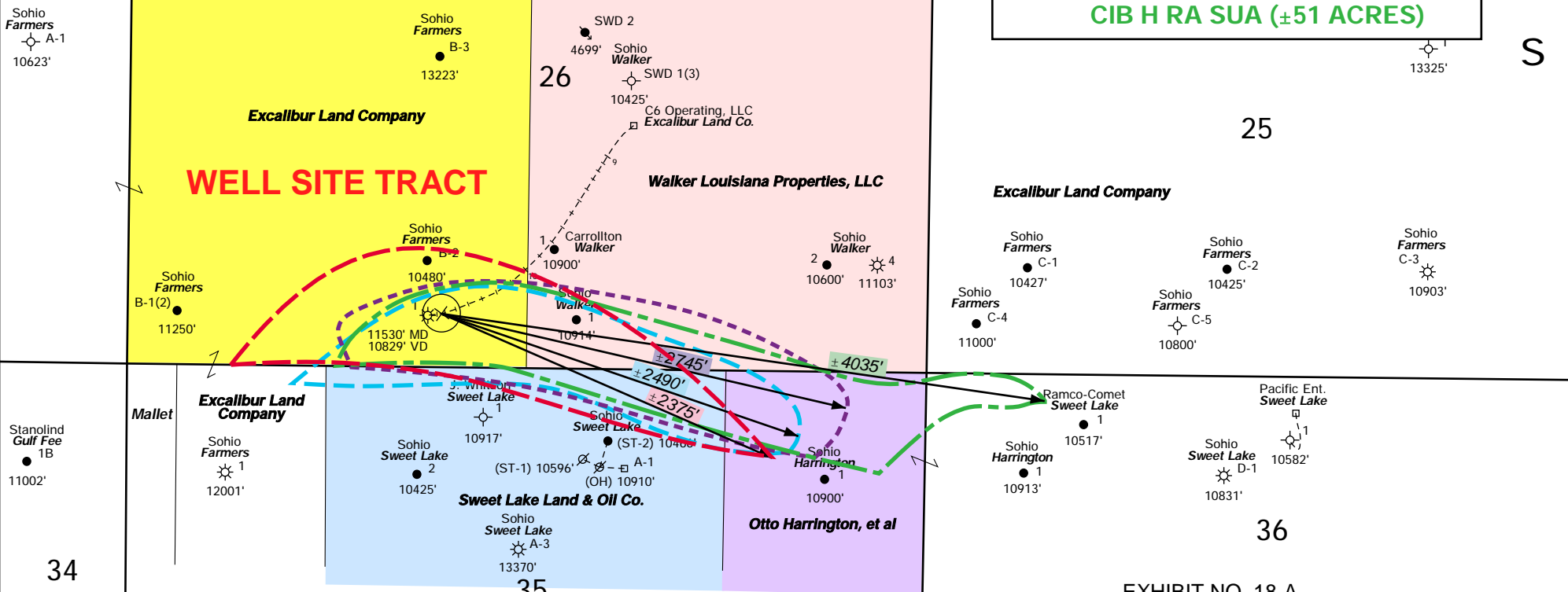


EXHIBIT NO. 18-A  
 DOCKET NOS. 19-88 Thru 90 DATE: 2-19-19

**EXCALIBUR LAND COMPANY**

HOLMWOOD FIELD  
 CALCASIEU PARISH, LOUISIANA

UNIT COMPARISON  
 CIB HAZ SAND

0 1000' 2000'

**BRYAN GROVES**  
 OIL & GAS GEOLOGIST  
 www.bryangrovesgeology.com

Sturlese, 1st PRE-APPL. CONF.: OCTOBER 3, 2018, Cib Haz Zone - Cam 2 & Cib Haz Sands COMBINED  
 Sturlese, 2nd POST APPL. CONF.: NOVEMBER 7, 2018, Cib Haz Sand ONLY  
 Groves/Sturlese/Wms., 3rd CONF.: DECEMBER 13, 2018, Marg-Cam Zone, Cam 2 Sd, Cib. hazz. Sd.  
 Groves/Sturlese/Wms., 4th CONF.: DECEMBER 20, 2018, Marg-Cam Zone, Cam 1-2 Zone, Cib. hazz. Sd.  
 HEARING DATE: FEBRUARY 19, 2019

R 7 W

T  
10  
S

27

25

26

36

35

34

Sohio Farmers  
A-1  
10623'

Sohio Farmers  
B-3  
13223'

SWD 2  
4699'  
Sohio Walker  
SWD 1(3)  
10425'

Sohio-Owen Farmers  
1  
13325'

Stanolind Gulf Fee  
1B  
11002'

Sohio Farmers  
1  
12001'

Sohio Sweet Lake  
2  
10425'

J. Whitson Sweet Lake  
1  
10917'  
Sohio Sweet Lake  
(ST-1) 10596'  
(ST-2) 10466'  
A-1 (OH) 10910'

Sohio Sweet Lake  
A-3  
13370'

Sohio Walker  
2  
10600'  
4  
11103'

Sohio Farmers  
C-1  
10427'  
Sohio Farmers  
C-4  
11000'

Sohio Farmers  
C-2  
10425'  
Sohio Farmers  
C-5  
10800'

Sohio Farmers  
C-3  
10903'

Ramco-Comet Sweet Lake  
1  
10517'  
Sohio Harrington  
1  
10913'

Pacific Ent. Sweet Lake  
1  
10582'  
Sohio Sweet Lake  
D-1  
10831'

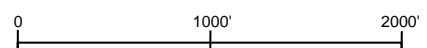
**STRUCTURAL LOWS**

--- CAM 1  
--- CAM 2  
--- CIB HAZ

EXHIBIT NO. 19  
DOCKET NOs. 19-88 Thru 90 DATE: 2-19-19

**EXCALIBUR LAND COMPANY**

HOLMWOOD FIELD  
CALCASIEU PARISH, LOUISIANA  
PRODUCTIVE AREAS &  
STRUCTURAL AXES



**BRYAN GROVES**  
OIL & GAS GEOLOGIST  
www.bryangrovesgeology.com

**BRYAN GROVES**  
OIL & GAS GEOLOGIST  
UNITIZATION / 3-D INTERPRETATION  
www.bryangrovesgeology.com

Sturlese, 1st PRE-APPL. CONF.: OCTOBER 3, 2018, Cib Haz Zone - Cam 2 & Cib Haz Sands COMBINED  
Sturlese, 2nd POST APPL. CONF.: NOVEMBER 7, 2018, Cib Haz Sand ONLY  
Groves/Sturlese/Wms., 3rd CONF.: DECEMBER 13, 2018, Marg-Cam Zone, Cam 2 Sd, Cib. hazz. Sd.  
Groves/Sturlese/Wms., 4th CONF.: DECEMBER 20, 2018, Marg-Cam Zone, Cam 1-2 Zone, Cib. hazz. Sd.  
HEARING DATE: FEBRUARY 19, 2019

R 7 W  
T  
10  
S

Sohio – Farmers B-2 – SN 33019 and B-2-D – SN 10480  
 Perf 10352-62 on 7-21-47 – Camerina  
 Squeeze perfs 10352-62 on 8-4-64  
 Perf 10328-336 on 8-16-64 – 2<sup>nd</sup> Camerina  
 Perf 10032-52 OA on 8-10-64 – 1<sup>st</sup> Camerina – Dual side Farmers B-2D  
 Squeeze perfs 10032-52 on 10-25-68  
 Perf 9868-74 on 10-28-68 – 2<sup>nd</sup> Marg 7  
 Add Perf 10314-321 on 1-22-69 – 2<sup>nd</sup> Camerina  
 Add Perf 10304-310 on 3-20-70 – 2<sup>nd</sup> Camerina  
 Work Permit to squeeze 9868-74 and perf 9986-94 on 2-14-72  
 Perf 9986-10000 OA on 3-9-72 – 1<sup>st</sup> Camerina  
 Add Perf 10286-96 on 3-22-72 – 2<sup>nd</sup> Camerina  
 Add Perf 10032-38 on 5-15-72 – 1<sup>st</sup> Camerina  
 Squeeze perfs 10286-96 to abandon Cam 2 – Set CIBP at 9950 to isolate Cam 1 on 5-30-77  
 Perf 9868-74 on 6-4-77 – 2<sup>nd</sup> Marg 7  
 Squeeze perfs 9868-74 and set BP at 9780' and dump 10' cement on top on 5-22-98  
 Perf 9759-65 on 6-1-98 – Marg A  
 P&A 12-6-01

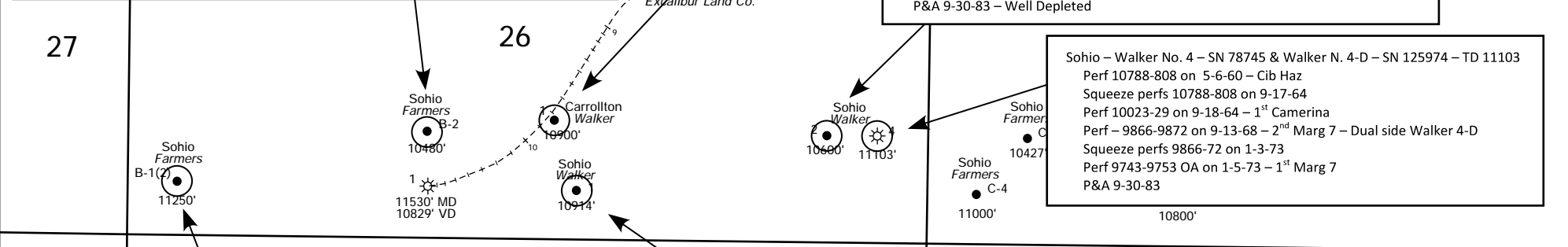
Carrollton – VUA; Walker Estate No. 1 – SN 216467 – TD 10900  
 Perf for Prod 10557-566 on 1-29-94 – 2<sup>nd</sup> Camerina – Lower B – Info shown on Form WH-1  
 Add Perfs 10394-405 on 2-2-94 – Info shown on Form WH-1  
 Set CIBP at 10360. Perf for test 10298-304 & 10317-21. Set CIBP at 10270. Perf for test 10231-235. Set CIBP at 10200. Work done 2-4-94 thru 2-14-94  
 Perf 9837-45 on 2-21-94 – Marg B  
 Set CIBP at 9794 on 1-19-98  
 Perf 9772-81 and 9766-70 on 1-19-98 – Marg A – No Flow – All zeroes on Form Comp  
 Set CIBP at 9710' on 1-26-98  
 Perf 9544-56 on 1-26-98 – Marg A1

Sohio – WE Walker No 2- SN 033338 – TD 10600  
 Perf 10356-366 on 7-11-47 – 2<sup>nd</sup> Camerina  
 Set CIBP at 9941' on 12-20-74  
 Perf 9867-9876 OA on 12-26-74 – 2<sup>nd</sup> Marg 7  
 TA 2-15-77 – Well depleted in 2<sup>nd</sup> Marg 7 per Form P&A  
 Work Permit dated 12-13-77 to set CIBP at 9820' and perf Marg A from 9547-57 OA  
 (No Form Comp or Form WH-1 in file – Work apparently done per P&A date)  
 P&A 9-30-83 – Well Depleted

Sohio – Walker No. 4 – SN 78745 & Walker N. 4-D – SN 125974 – TD 11103  
 Perf 10788-808 on 5-6-60 – Cib Haz  
 Squeeze perfs 10788-808 on 9-17-64  
 Perf 10023-29 on 9-18-64 – 1<sup>st</sup> Camerina  
 Perf – 9866-9872 on 9-13-68 – 2<sup>nd</sup> Marg 7 – Dual side Walker 4-D  
 Squeeze perfs 9866-72 on 1-3-73  
 Perf 9743-9753 OA on 1-5-73 – 1<sup>st</sup> Marg 7  
 P&A 9-30-83

Sohio – Walker No. 1 – SN 32994 and Walker 1-D – SN 105020 – TD 10914  
 Perf 10280-305 on 5-10-47 – Cam 2  
 Perf 10037-43 on 9-12-64 – Cam 1 (dual side Walker 1-D) - Depletes in Cam 1- Form P&A 2-8-74  
 Perf 10772-778 on 3-20-79 – Cib Haz  
 Set CIBP at 10270. Perf 10207-212 on 3-16-83 – Camerina Stray  
 Set CIBP at 10000. Perf 9874-77 on 1-25-85 - Marg 7 – RCP Unsuccessful per Form Comp  
 P&A 8-16-85

Sohio – Farmers B-1 – SN 32380 – TD – 11250  
 Perf 10412-17 on 2-3-47. Test salt water – Squeeze on 2-5-47  
 Perf 10354-62 on 2-9-47 – No Sand designation – 2<sup>nd</sup> Camerina?  
 Squeeze perfs 10354-62 on 6-12-47  
 Perf 10352-58 on 6-30-47 – No Sand designation – 2<sup>nd</sup> Camerina ?  
 Squeeze 10352-58 on 8-15-47  
 Perf 10780-800 on 8-22-47 – No Sand designation – Cib Haz?  
 Work Permit dated 4-9-48 to squeeze 10780-800  
 Perf 10318-28 on 4-19-48 for production test – no further file information on these perfs  
 Perf 10354-58 on 4-28-48 – 2<sup>nd</sup> Camerina  
 Squeeze perfs 10354-58 on 7-3-56  
 Perf 10780-90 on 7-19-56  
 Squeeze Perfs 10780-90 on 7-25-56  
 Perf 10795-810 in January 1957 per Sohio letter – Unsuccessful.  
 Set CIBP at 10648' on 4-25-58  
 Perf 10354-58 on 4-25-58  
 Squeeze perfs 10354-58 on 2-12-60  
 Perf 10070-74 on 2-20-60 – 1<sup>st</sup> Camerina A  
 Work Permit dated 3-26-69 to set CIBP at 9800'  
 Perf 9582-88 on 7-2-69 – Marg A  
 P&A 1-26-71



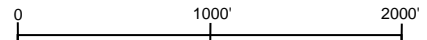
**SEE EXHIBIT #7 FOR CROSS-SECTION**

EXHIBIT NO. 20  
 DOCKET NOS. 19-88 Thru 90 DATE: 2-19-19

**EXCALIBUR LAND COMPANY**

HOLMWOOD FIELD  
 CALCASIEU PARISH, LOUISIANA

SELECT PERFORATED INTERVALS



**BRYAN GROVES**  
 OIL & GAS GEOLOGIST  
 www.bryangrovesgeology.com

**BRYAN GROVES**  
 OIL & GAS GEOLOGIST  
 UNITIZATION / 3-D INTERPRETATION  
 www.bryangrovesgeology.com

Sturlese, 1st PRE-APPL. CONF.: OCTOBER 3, 2018, Cib Haz Zone - Cam 2 & Cib Haz Sands COMBINED  
 Sturlese, 2nd POST APPL. CONF.: NOVEMBER 7, 2018, Cib Haz Sand ONLY  
 Groves/Sturlese/Wms., 3rd CONF.: DECEMBER 13, 2018, Marg-Cam Zone, Cam 2 Sd, Cib. hazz. Sd.  
 Groves/Sturlese/Wms., 4th CONF.: DECEMBER 20, 2018, Marg-Cam Zone, Cam 1-2 Zone, Cib. hazz. Sd.  
 HEARING DATE: FEBRUARY 19, 2019



R 7 W

27

T  
10  
S

Sohio Farmers  
A-1  
10623'  
\*KB 38'

Sohio Farmers  
B-3  
13223'  
KB 45'

26

SWD 2  
4699'  
Sohio Walker  
SWD 1(3)  
10425'  
\*KB 32'  
C6 Operating, LLC  
Excalibur Land Co.

25

Sohio-Owen Farmers  
1  
13325'  
\*KB 37'

Sohio Farmers  
B-1(2)  
11250'  
\*KB 37'

Sohio Farmers  
B-2  
10480'  
\*KB 41'  
1  
11530' MD  
10829' VD  
KB 39'

1  
10900'  
Carrollton Walker  
KB 37'  
Sohio Walker  
1  
10914'  
\*KB 39'

Sohio Walker  
2  
10600'  
11103'  
\*KB 36' \*KB 37'

Sohio Farmers  
C-1  
10427'  
\*KB 36'  
Sohio Farmers  
C-4  
11000'  
KB 33'

Sohio Farmers  
C-2  
10425'  
\*KB 38'  
Sohio Farmers  
C-5  
10800'  
KB 34'

Sohio Farmers  
C-3  
10903'  
\*KB 38' Est.

Stanolind Gulf Fee  
1B  
11002'  
\*KB 38' Est.

Sohio Farmers  
1  
12001'  
\*KB 37'

34

J. Whitson Sweet Lake  
1  
10917'  
KB 35'  
Sohio Sweet Lake  
(ST-1) 10596'  
\*KB 40'(OH)  
Sohio Sweet Lake  
(ST-2) 10466'  
A-1  
10910'

Sohio Harrington  
1  
10900'  
\*KB 33'

Ramco-Comet Sweet Lake  
1  
10517'  
KB 34'  
Sohio Harrington  
1  
10913'  
\*KB 32'

Pacific Ent. Sweet Lake  
1  
10582'  
KB 41'  
Sohio Sweet Lake  
D-1  
10831'  
\*KB 35'

36

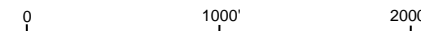
*\*KB DATA PER DOCKET 69-314*

EXHIBIT NO. 21  
DOCKET NOS. 19-88 Thru 90 DATE: 2-19-19

**EXCALIBUR LAND COMPANY**

HOLMWOOD FIELD  
CALCASIEU PARISH, LOUISIANA

KELLY BUSHING CORRECTIONS



**BRYAN GROVES**  
OIL & GAS GEOLOGIST  
www.bryangrovesgeology.com

**BRYAN GROVES**  
OIL & GAS GEOLOGIST

UNITIZATION / 3-D INTERPRETATION

www.bryangrovesgeology.com

Sturlese, 1st PRE-APPL. CONF.: OCTOBER 3, 2018, Cib Hazz Zone - Cam 2 & Cib Hazz Sands COMBINED  
Sturlese, 2nd POST APPL. CONF.: NOVEMBER 7, 2018, Cib Hazz Sand ONLY  
Groves/Sturlese/Wms., 3rd CONF.: DECEMBER 13, 2018, Marg-Cam Zone, Cam 2 Sd, Cib. hazz. Sd.  
Groves/Sturlese/Wms., 4th CONF.: DECEMBER 20, 2018, Marg-Cam Zone, Cam 1-2 Zone, Cib. hazz. Sd.  
HEARING DATE: FEBRUARY 19, 2019